

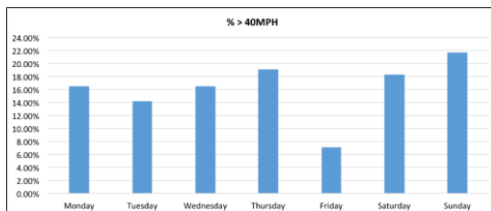


Safe-Speed ANPR System Information Sheet

The Safe-Speed System has been developed to support the safety of local communities through the identification of speeding vehicles. Many drivers use routes through our small towns, parishes and villages to overcome dense traffic on major routes but without consideration for local speed limits or the danger caused by exceeding them. Safe-Speed is a system that targets those drivers who do not consider their environments or the speed limits imposed to ensure the safety of residents.

What does the system do?

The Safe-Speed System includes an Intelligent ANPR Camera which captures the licence plates of all vehicles on the targeted route. The ANPR camera is complimented by a radar unit which identifies the speed of each vehicle that passes in front of the system and records it in a web-based software package. This software gathers all of the data provided by the camera and stores the information to enable tracking of traffic patterns and speeds of all vehicles. From this information the software enables the generation of reports which identify vehicles that have exceeded the speed limit to various levels.



Providing this level of detail shows the extent of danger certain drivers are creating through their lack of consideration.

Additionally, reports can be used to show the average speed over given time, allowing for comparisons and targeted reductions in speed following the use of the system. Traffic volumes and patterns can be identified to show the times and days that your chosen route faces the heaviest levels of vehicles. Worst offenders can also be identified in both the highest speeds identified and the most regularly speeding vehicles over your chosen time frame. These are just a few of the reports that can be generated using the system, providing the tools to discuss the speeding problems your community is facing with your local Police and Council.

What does it cost?

To support the adoption of this system by communities such as yours we have developed a pricing structure for one or more cameras to try and meet various budgets.

An example of the pricing - £7499 + VAT including full ANPR System and 1-year software and data usage.

Further packages for extended software usage and system rental are available.



Other Important Information

- Installation is not included in the pricing
- This is a system for speed awareness and cannot be used for stand-alone enforcement
- Partnerships with local Police Forces need to be established for actions to be taken against offenders
- Full support will be provided for set-up, configuration and use of the system and software



A detailed look at the system

The Software

- Creation & management of user accounts with user roles
- Easy to use interface allows user to view individual events as well as search & report on events with specified criteria
- Live recent-traffic page shows events as they occur flagging speeding and blacklisted events
- Manage blacklists & authorised lists and set up alerts (email & SMS)
- Configuration of customer specific categories - (e.g. 35-45Mph, >50mph) – categories can overlap
- Blacklists can be used to group vehicles of interest (for example vehicles that have already been warned in regards to speeding patterns)

Searching

- Advanced Search – search for individual plates or all plates over a specified time range
- Blacklisted/Authorised plate search
- Speed searches by blacklist (to identify extent of changes in behaviour following warnings)
- Speed search with flexible search criteria for identifying speeding behaviours
- Speed searching by customer specific categories
- Site occupancy (potential use for point-to-point average speed cameras)

Graphs & Statistics

- Detailed graphs showing current traffic, plate frequency & camera performance
- Speed graphs show average speeds, average traffic volumes
- Graphs showing total traffic and percentage speeding
- Graphs showing traffic flows by hour, day of the week over given periods
- Graphs showing traffic speeds by hour, day of the week over given periods
- Printable graphs – exportable as PDFs

Reporting & Exporting

Traffic analysis reports

- Traffic listings
- Plate frequency
- Blacklisted/Authorised plate sightings

Speed related reports

- Speed exceeded
- Speeder volumes
- Speed summary (UK only)
- Worst offenders
- Speed searches by blacklist (to identify extent of changes in behaviour following warnings)
- Reporting by customer specific categories

Automatic Number Plate Recognition (ANPR) camera

- Fast and cost-effective
- Unlimited number of cameras can be added to the system to create full coverage
- Capable of heavy traffic loads with simultaneous multiple plate tracking
- Leading intelligent ANPR camera providing accuracy and performance
- Seamless integration with software and radar

